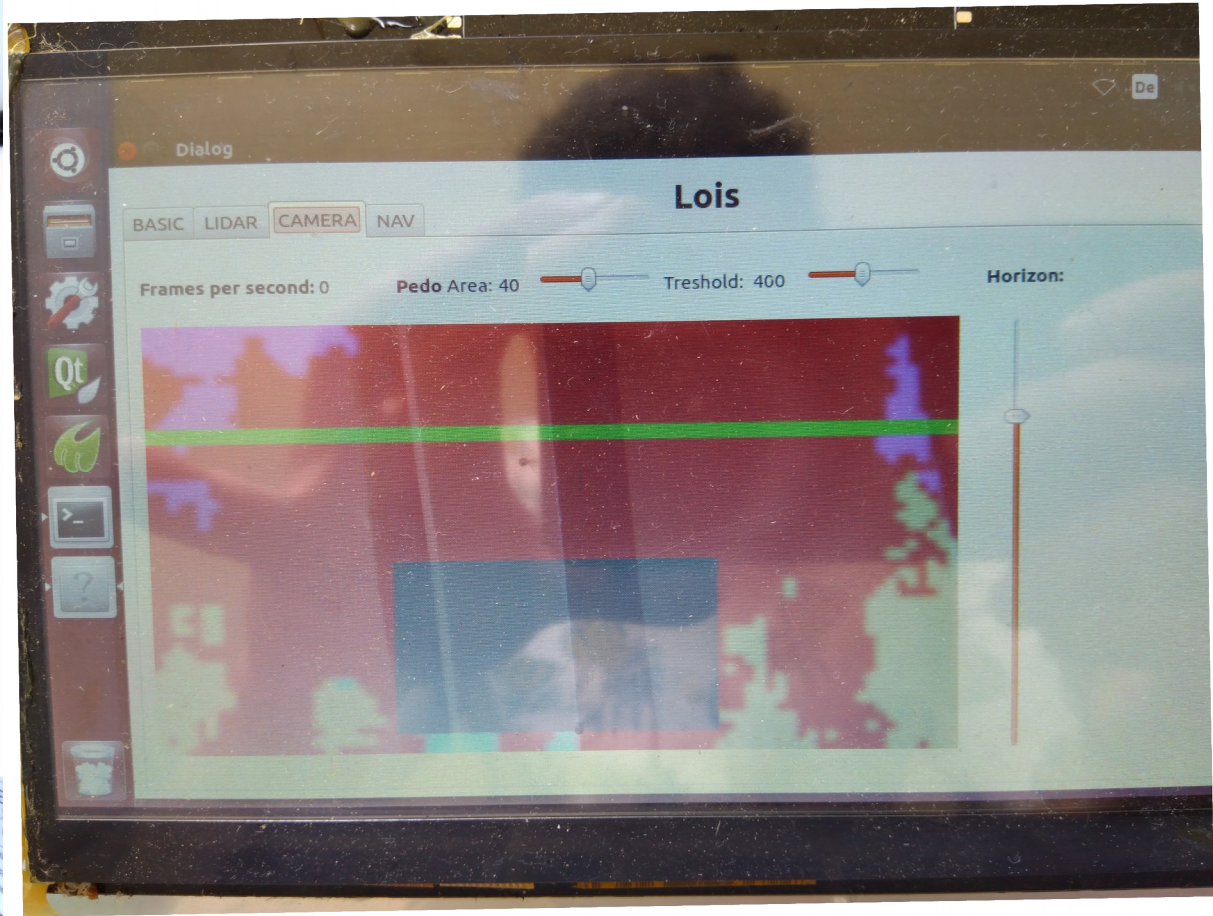


# JECC Lois



- Nvidia Jetson Tk1
- Navigation with OSM-Data, Ublox 7 GPS and BNO055 IMU
- Neural Network and RPLidar
- Lowlevel control with custommade PCB



# Problems

- RPLidar did not work for some reason
- Yellow color of castle

# Future Plans

- More compact
- Intel CPU
- Brushless motors